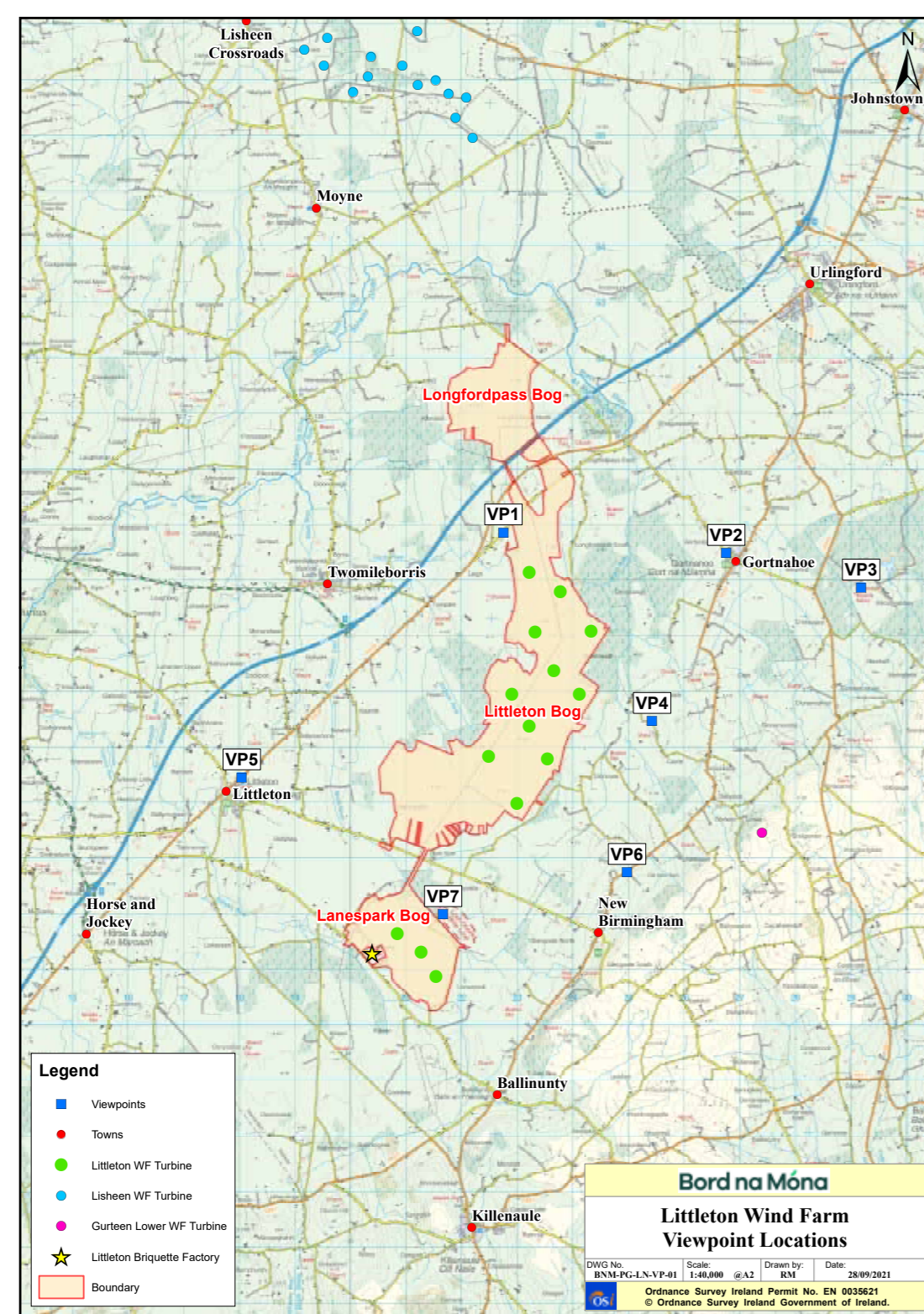


# Photomontage Booklet for Proposed Littleton Wind Farm





### What is a Photomontage?

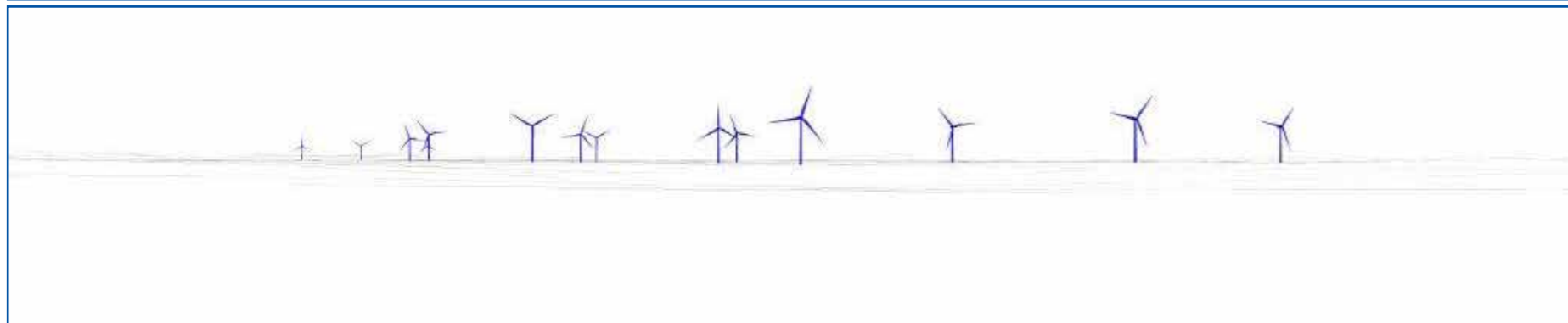
A typical tool utilised in the assessment of the visual impact of a wind farm is a Photomontage. Photomontages are visualisations that superimpose an image of a proposed development upon a photograph or series of photographs and are used to illustrate the potential impact of a development on the existing landscape. A number of photomontages will accompany the planning application as part of the Landscape and Visual Impact Assessment (LVIA) for the proposed wind farm. Within this booklet you will find samples of the photomontages which will form part of the LVIA for this proposed development.

To view a larger copy of the viewpoint map shown here please refer to the A2 double sided map included in the project consultation pack.



**Viewpoint 1:** View from Local Road in the townland of Leigh approximately 1km west of the proposed development. VP1 on Viewpoint Locations Map.





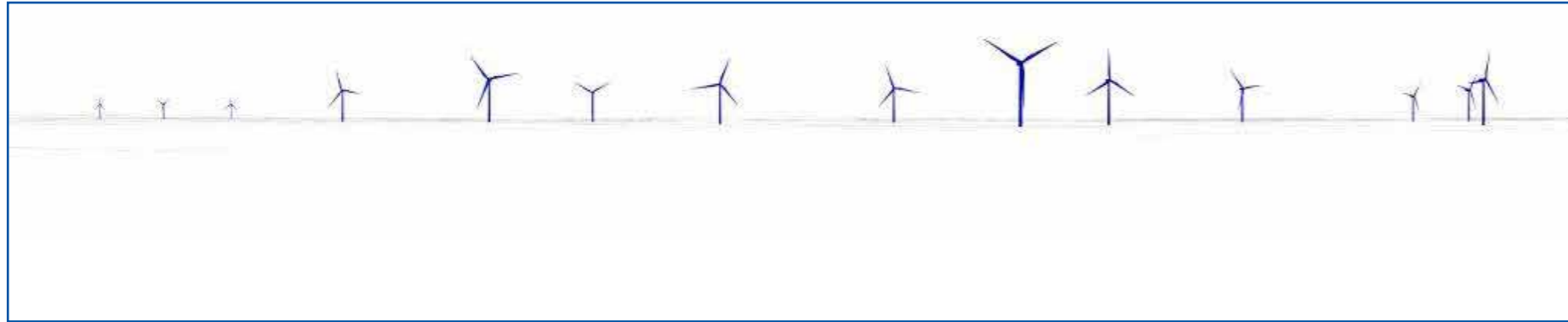
**Viewpoint 2:** View from the Good Shepard Cemetery at Gortnahoe, approximately 2.5km northeast of the proposed development.  
**VP2** on Viewpoint Locations Map.

| Legend                |  |
|-----------------------|--|
| Littleton WF Turbines |  |



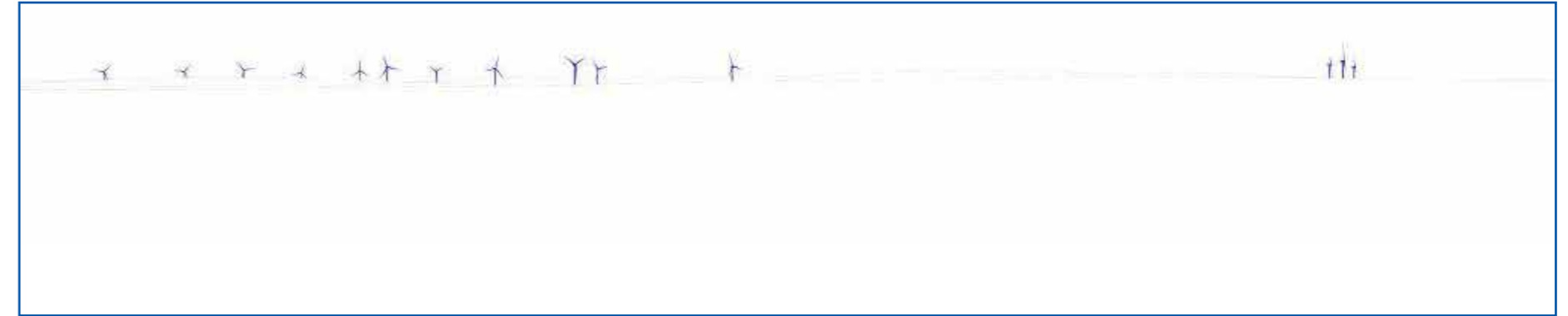
**Viewpoint 3:** View from Kilcooley Abbey, approximately 4.5km northeast of the proposed development.  
**VP3** on Viewpoint Locations Map.

| Legend                |  |
|-----------------------|--|
| Littleton WF Turbines |  |



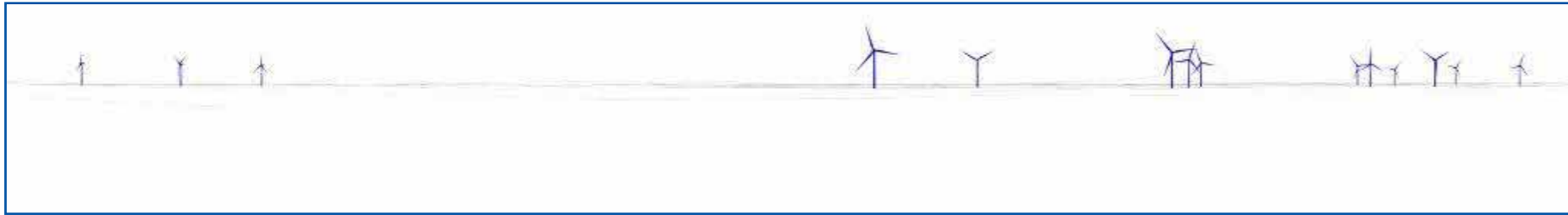
**Viewpoint 4:** View from the Local Road in the townland of Bawnreagh, approximately 1.1km east of the proposed development.  
**VP4** on Viewpoint Locations Map.

| Legend                |  |
|-----------------------|--|
| Littleton WF Turbines | <span style="display: inline-block; width: 15px; height: 10px; background-color: #0056b3;"></span> |




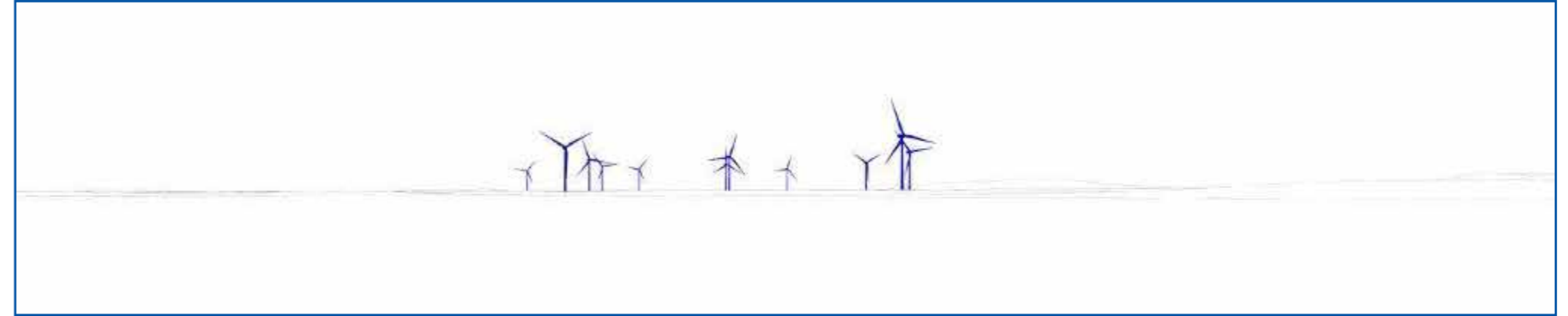
**Viewpoint 5:** View from the Regional Road (R639), north of Littleton, in the townland of Ballydavid and approximately 2.5km west of the proposed development.  
**VP5** on Viewpoint Locations Map.

| Legend                |  |
|-----------------------|--|
| Littleton WF Turbines | <span style="display: inline-block; width: 15px; height: 10px; background-color: #0056b3;"></span> |




**Viewpoint 6:** View from the Regional Road (R689) in the townland of Poynstown, approximately 2.1km east of the proposed development.  
**VP6** on Viewpoint Locations Map.

| Legend                |   |
|-----------------------|---|
| Littleton WF Turbines |  |



**Viewpoint 7a:** View from Lough Doire Bhile Looped Walking Trailing looking north and approximately 2.4km from the proposed development.  
**VP7** on Viewpoint Locations Map.

| Legend                |   |
|-----------------------|---|
| Littleton WF Turbines |  |



